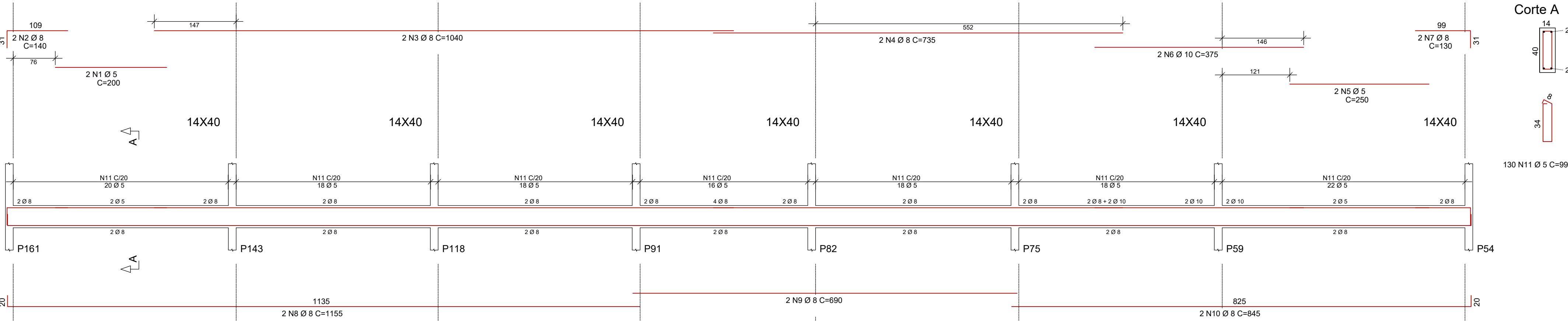
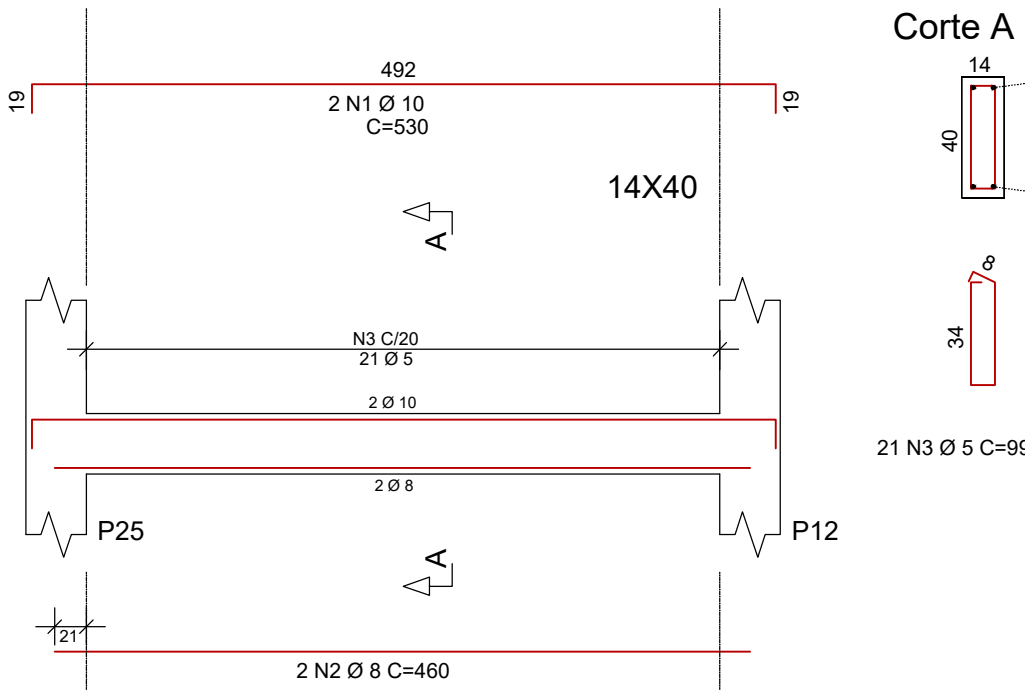


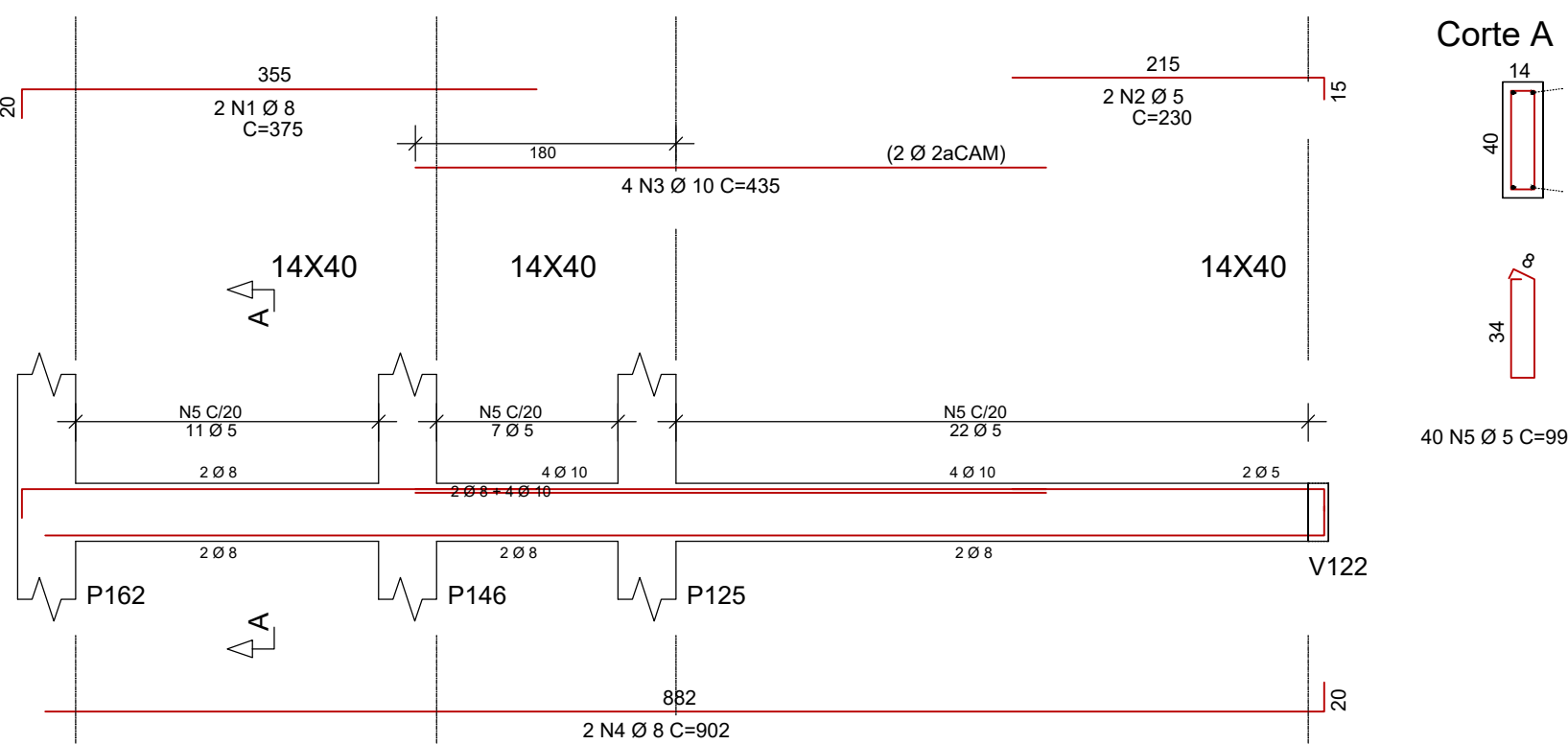
V156



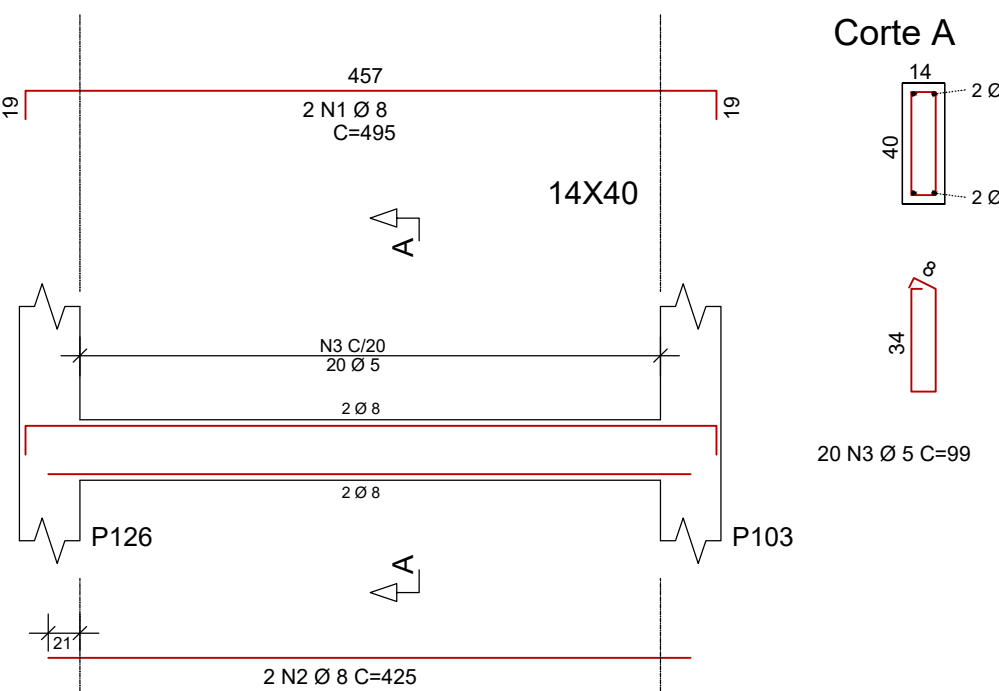
V157



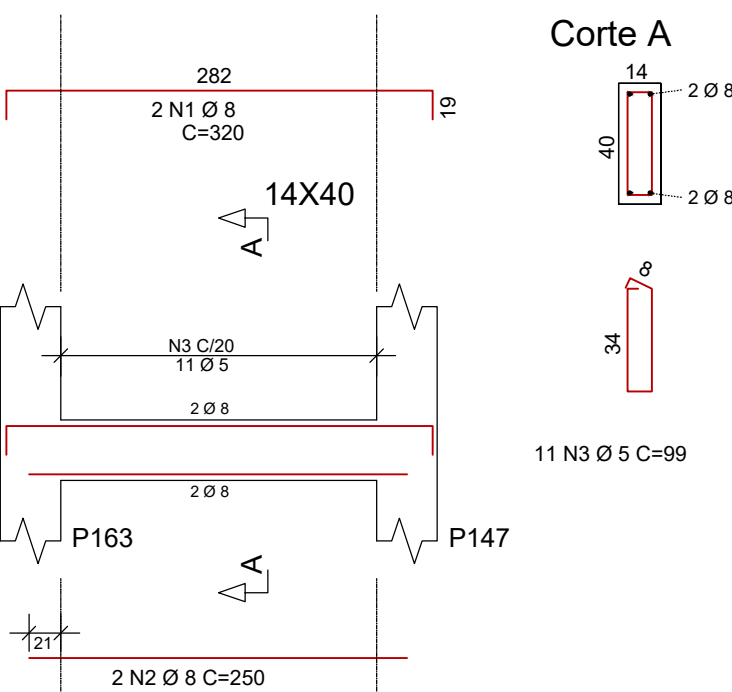
V158



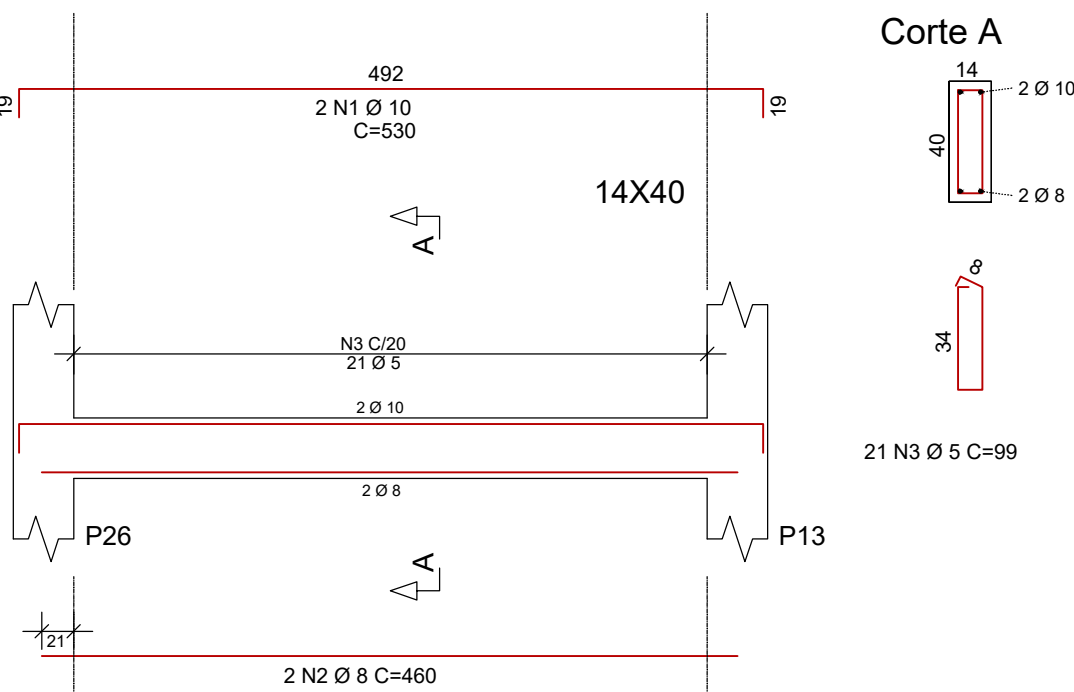
V159



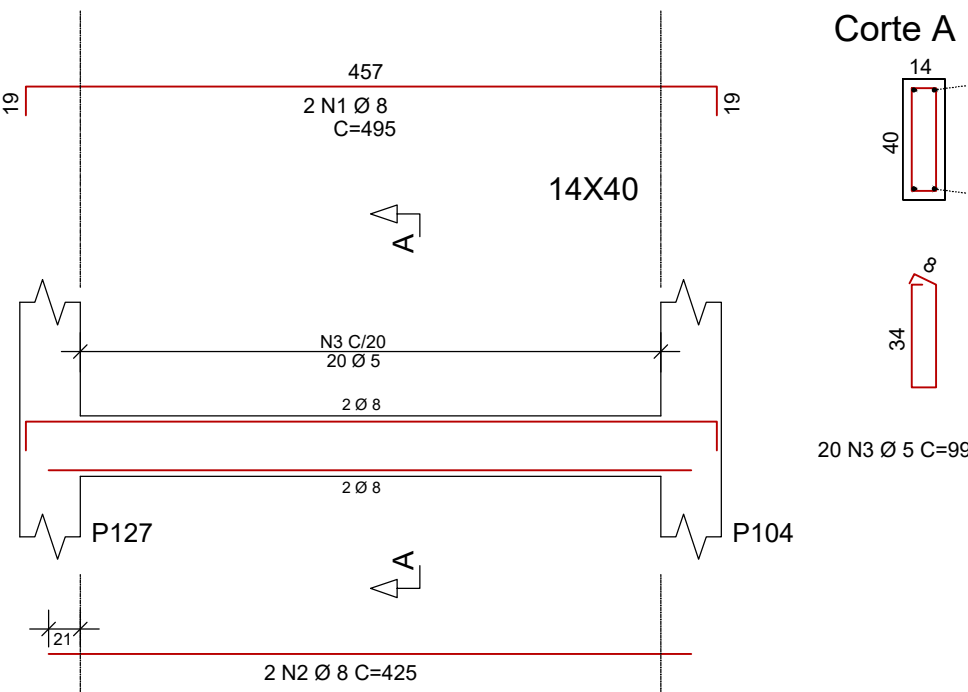
V160



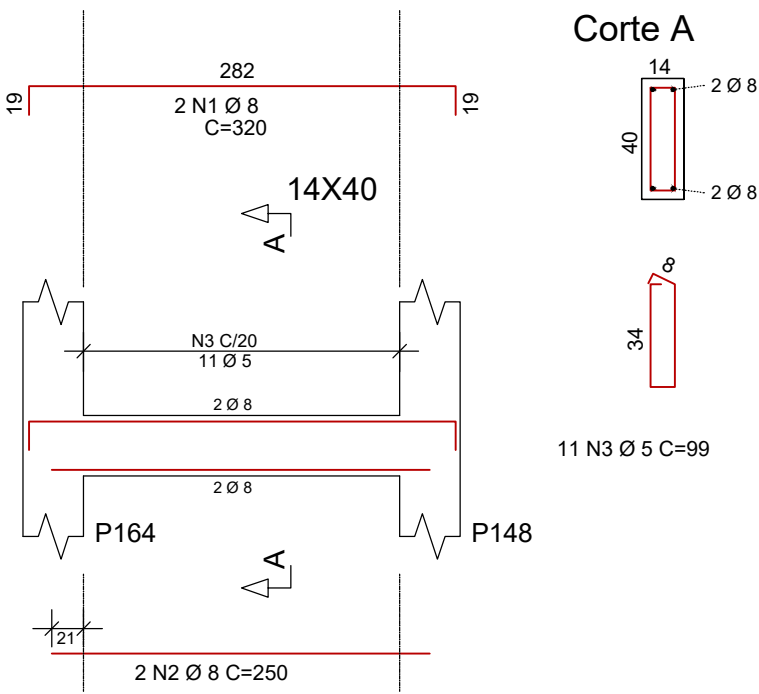
V161



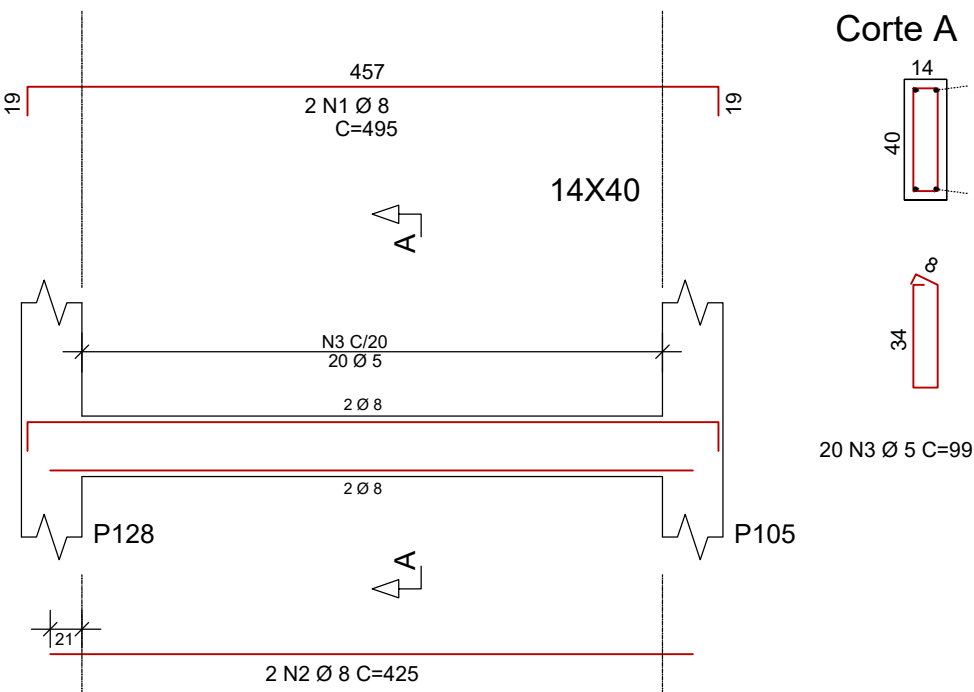
V162



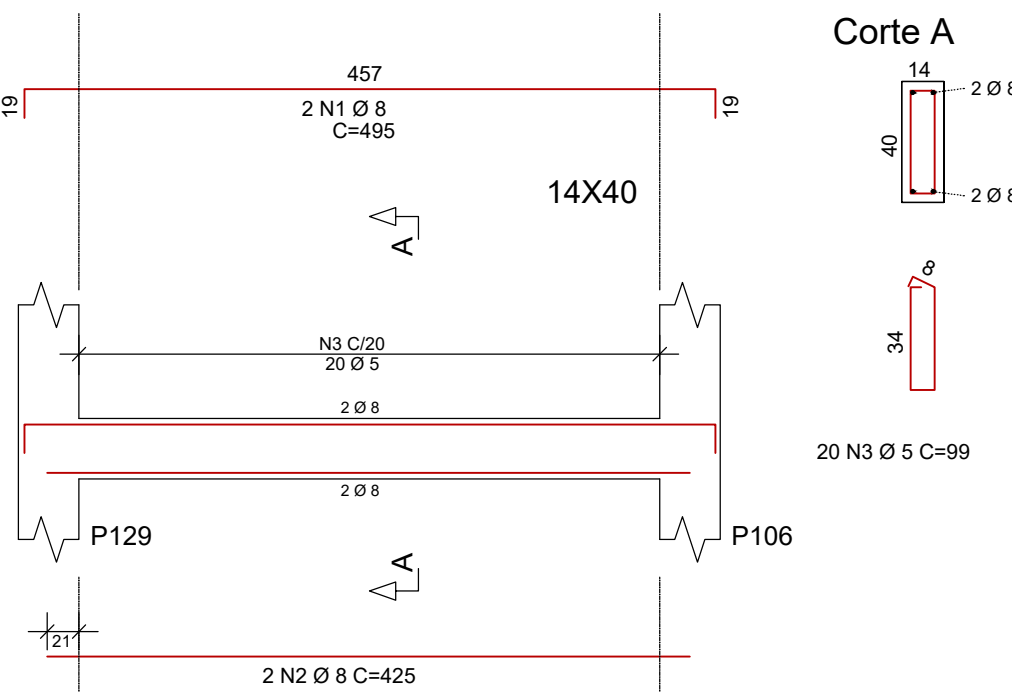
V163



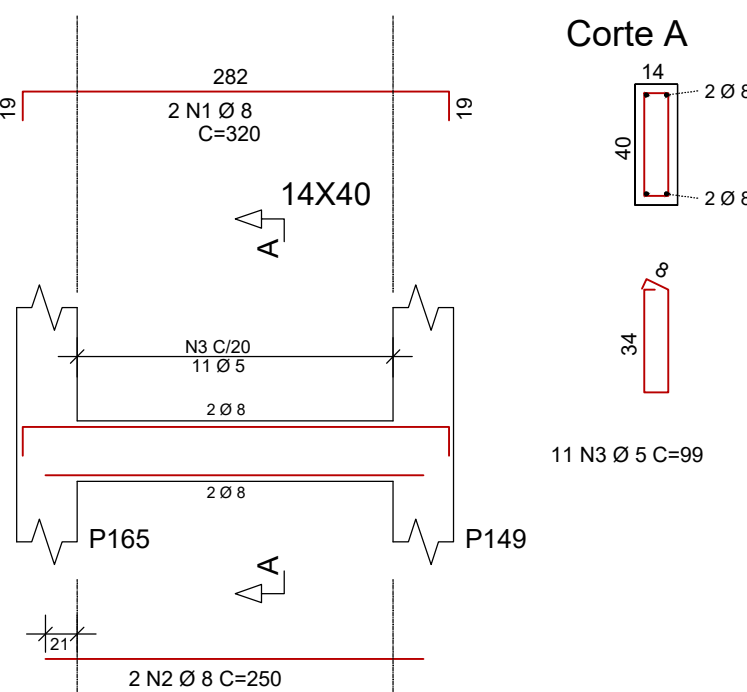
V164



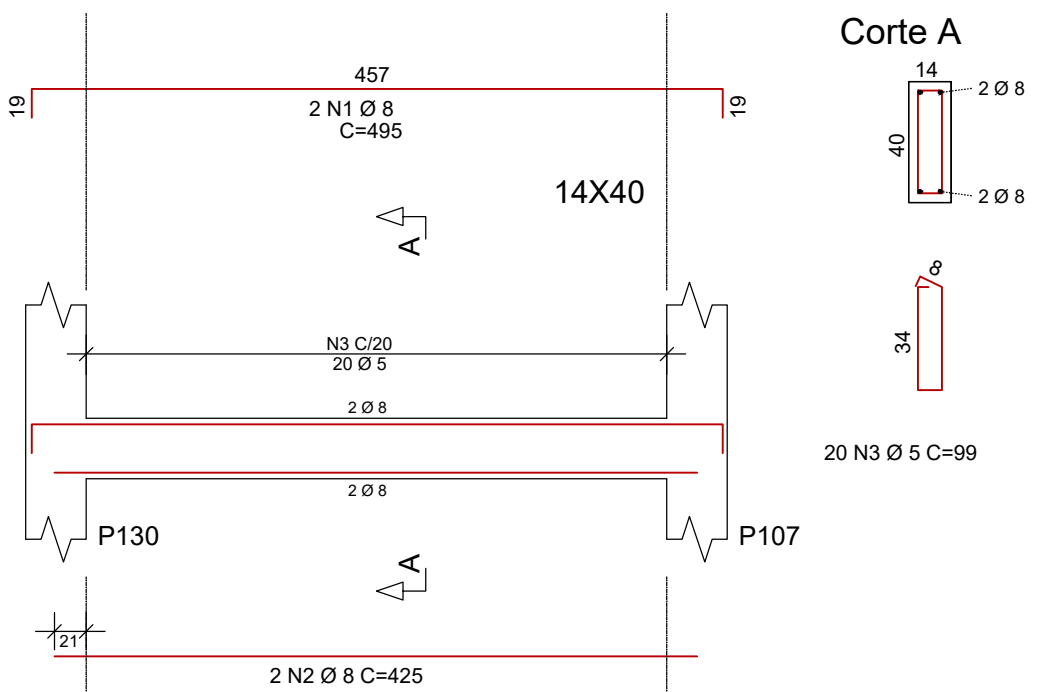
V165



V166



V167



AÇO	POS	BIT (mm)	QUANT	COMPRIMENTO		
				UNIT (cm)	TOTAL (cm)	
V156	60B	1	5	2	200	400
		2	8	2	140	280
	50A	3	8	2	1040	2080
	50A	4	8	2	735	1470
	60B	5	5	2	250	500
	50A	6	10	2	375	750
	50A	7	8	2	130	260
	50A	8	8	2	1155	2310
	50A	9	8	2	690	1380
	50A	10	8	2	845	1690
60B	11	5	130	99	12870	
V157	50A	1	10	2	530	1060
		2	8	2	460	920
		3	5	21	99	2079
V158	50A	1	8	2	375	750
		2	5	2	230	460
		3	10	4	435	1740
		4	8	2	902	1804
		5	5	5	40	99
V159	50A	1	8	2	495	990
		2	8	2	425	850
		3	5	20	99	1980
V160	50A	1	8	2	320	640
		2	8	2	250	500
		3	5	11	99	1089
V161	50A	1	10	2	530	1060
		2	8	2	460	920
		3	5	21	99	2079
V162	50A	1	8	2	495	990
		2	8	2	425	850
		3	5	20	99	1980
V163	50A	1	8	2	320	640
		2	8	2	250	500
		3	5	11	99	1089
V164	50A	1	8	2	495	990
		2	8	2	425	850
		3	5	20	99	1980
V165	50A	1	8	2	320	640
		2	8	2	250	500
		3	5	11	99	1089
V166	50A	1	8	2	495	990
		2	8	2	425	850
		3	5	20	99	1980
V167	50A	1	8	2	320	640
		2	8	2	250	500
		3	5	11	99	1089
V167	50A	1	8	2	495	990
		2	8	2	425	850
		3	5	20	99	1980

RESUMO AÇO CA 50-60			
AÇO	BIT (mm)	COMPR (m)	PESO (kg)
60B	5	355	55
50A	8	265	105
50A	10	46	28
Peso Total 60B =		55 kg	
Peso Total 50A =		133 kg	

Eixo Faces  
Volume de concreto de VIGAS (m3) 4.1 3.7  
Taxa de armadura (kg/m3) 46.0 50.2

ESPAÇO RESERVADO PARA PREFEITURA:

PROJETO:  
TERMINAL RODOVIÁRIO DE VÁRZEA GRANDE - MT

CONTRATO: O.S Nº: 001/2021

Nº: XXXX REVISÃO Nº: 02 DATA:

DATA:

ESCALA INDICADA:  
ESCALA INDICADA NO PROJETO

CONTEÚDO:

• DETALHAMENTO DE VIGAS BALDRAME

NOME DO CLIENTE:



AUTOR DO PROJETO:

RESPONSÁVEL TÉCNICO DO PROJETO:

RRT PROJETO:

RRT DE EXECUÇÃO:

ASSINATURA DO CLIENTE:

ASSINATURA PROFISSIONAL:

ASSINATURA PROFISSIONAL:

CONFIGURAÇÃO DE PLOTAGEM:

☐ MODELO PMC

☐ ARQUIVO EM ANEXO: